

Excel Packaging & Insulation Co. Ltd

Company Presentation 2024

Company Presentation 2024

Introduction

- Excel is a specialist manufacturer of custom-made protective foam packaging, thermally insulated containers, short-run corrugated cartons, and ply/batten wooden crates & non-standard size pallets.
- We are a leading converter of industrial and technical foams. Our manufacturing processes include hot-wire cutting, band-knifing, profiling, contouring, die-cutting, slitting, boring, CNC routing and knifing, heat-welding / gluing / laminating.
- We convert expanded polystyrene foam, extruded polystyrene foam, expanded polyethylene foam, flexible polyurethane/polyether foam, Plastazote® foam, and expanded polypropylene foam.
- We design & manufacture solutions for a wide range of different industries/market sectors, including industrial products, consumer products, presentation/point-of-sale, electronics, IT, medical/pharmaceutical & food (cold chain), construction & civil engineering, heating & ventilation, as well as scenic construction for film, television & theatre.

EXCEL

Our history

Excel was founded by Graham Woolley in January 1994. Originally based in Uxbridge, Middlesex, in 2000 the company moved to its current premises in Rickmansworth, Hertfordshire.

In addition to providing custom-made protective packaging solutions, originally Excel also manufactured specialist products for the warm-water underfloor heating industry. However, with demand for these products beginning to grow rapidly, in 2012 this part of the business was separated out into a stand-alone company, Epic Insulation Ltd, operating from its own premises on the same industrial estate.

In 2018 Excel acquired an additional premises adjacent to the original factory. This acquisition provided the extra space needed for the company to invest in a large-format CNC routing/knifing/creasing table on which a wide variety of materials can be processed, including foam, corrugated cardboard, honeycomb board, wood, metal, plastics etc.

Excel's growth can largely be attributed to Graham's commitment to continually re-invest in the business, coupled with a desire to provide great customer service fuelled by a positive 'can do' culture.

The Excel logo is displayed in a blue serif font, with each letter of the word 'EXCEL' contained within its own white rectangular box. The background of the entire slide is a collage of various images related to manufacturing and packaging, including cardboard boxes, machinery, and finished products.

EXCEL

Meet the team



Graham Woolley
Founder and Managing Director



Mimoun Elhoussaini
Operations Manager



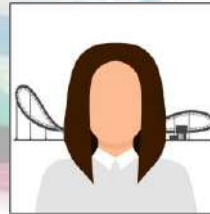
Mark Slade
Business Development Manager



Peter Woolley
Sales / Production Co-ordinator



Jane Keough
Financial Controller



Amy-Jane Rummey
Sales Office Administrator



Naveed Akhter
Design and CNC Supervisor



Alex Birdsall
Trainee Designer and CNC
Machine Operator



Krzysztof Krus
Factory Supervisor

EXCEL

Our materials

✓ Polystyrene blocks and sheets

✓ Expanded polyethylene foam

✓ Plastazote® & Evazote® foam

✓ Flexible polyurethane foam

✓ Expanded polypropylene foam

✓ Envirafoam® specialist solutions



✓ Ply/Batten wooden crates

✓ Non-standard wooden pallets

✓ Honeycomb board & fittings

✓ Moulded polystyrene containers

✓ Short-run Corrugated cartons

✓ Speciality corrugated materials

• We are a UK Manufacturer



EXCEL

Theatre, Film & Display Packaging

Excel has established its position as a major supplier to the film Industry, television and theatre companies, shop display, exhibition, themed event and other similar industries. With 30 years of experience in this field, we supply a wide range of products and materials to construction managers and buyers, sculptors, special effects departments, prop makers, model makers, scenic artists and designers.

We can supply many commonly used products and materials and can also produce the finished article by employing manufacturing techniques ranging from hot-wire cutting and band knifing to routing and laminating.

- ✓ **Expanded polystyrene blocks & sheets**
- ✓ **Hard-coats for polystyrene**
- ✓ **Polystyrene spheres**
- ✓ **Soudafoam Gun Foam and H60 Quick dry contact adhesive**
- ✓ **Soudafoam Guns and gun cleaner**
- ✓ **Large Polythene Scrap Bags**
- ✓ **Grafix PVC foam sheets (Foamex)**
- ✓ **Corrugated stock cartons**



Theatre, Film & Display Packaging

Custom 2D and 3D Polystyrene Shapes

We can produce complex 2-D and 3-D shapes and profiles in expanded polystyrene and many other foam plastic materials for props, models and a variety of scenic display applications including corporate logos and lettering for exhibitions, shop displays and themed events.



Theatre, Film & Display Packaging

Past Productions:

We have had the pleasure of supplying materials for an extensive and varied list of productions. Our involvement in these projects ranged from the supply of stock products and materials to the production of complex finished shapes and structures. Productions we have supplied materials for are listed below;

Corpse Bride

007 Die
Another
Day

Charlie & the
Chocolate Factory

007 Casino Royal

The Mummy I & II

The
DaVinci
Code

Flyboys

Shakespeare
in Love

Phantom of The Opera

Harry
Potter

Thunderbirds

Paddington 3

Star Wars
Andor

Sweeney
Todd

Lord of the
Rings

Hogfather

The
Intimidation
Game

The
Millenium
Dome

The
Magic
Flute

Dinotopia

Red I

Aladdin

Red II

Saraha

Fast & Furious
I, II, III, IV, V etc

Mission
Impossible

The Nevers

Sandman

Barbie

Little Mermaid

The Nutcracker and the Four Realms

Morbius

Expanded Polystyrene foam

Expanded Polystyrene foam (EPS) is a very versatile, low cost, rigid, closed cell foam produced from solid beads of polystyrene which expand when heat (in the form of steam) is applied to them. These expanded cells occupy approximately 40 times the volume of the original solid beads, resulting in a very light-weight, fully recyclable material, **98%** of which is simply air. Many grades also now contain at least 30% recycled material, thereby avoiding Plastic Packaging Tax (PPT).



Excel cuts large blocks of expanded polystyrene into sheets or pads using hot-wires, with further processing undertaken by either hot-wire 'scooping' or 'profiling', or by CNC routing, to create the final product.

EXCEL

Thermally Insulated Moulded Polystyrene Cold Boxes

✓ Thermal Insulation Boxes



Moulded Polystyrene (EPS) Cold Boxes provide a lightweight, water resistant, hygienic, low-cost solution for the transportation of temperature sensitive products.

✓ Fabricated Cold Boxes



Fabricated Cold Boxes provide a lightweight, low-cost solution for the transportation of temperature sensitive products and can be manufactured to any size.

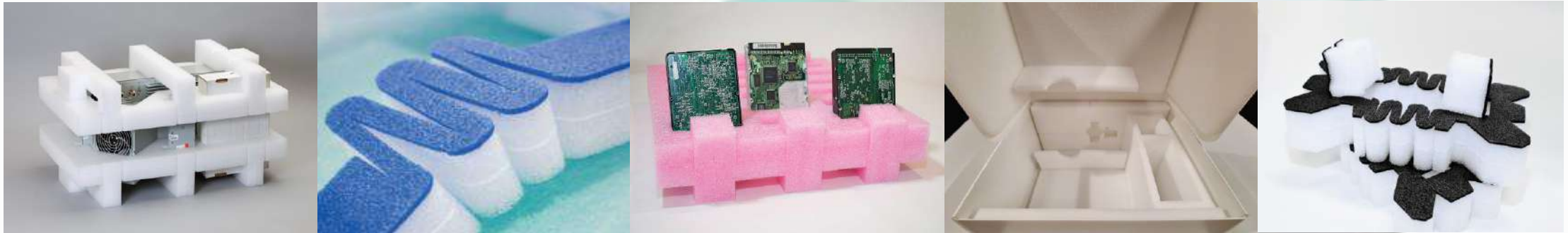
Expanded Polyethylene foam (Stratocell®)

Stratocell® laminated expanded polyethylene foam (LDPE) is a light-weight, non-abrasive, closed cell foam, ideal for packaging applications where a high level of cushioning protection is required. In addition to being fully recyclable, most grades now contain at least 30% recycled material, thereby avoiding Plastic Packaging Tax (PPT).

Excel designs custom-engineered protective packaging solutions using Stratocell® foam to protect your products from damage whilst in transit and to present it in a professional format. Manufacturing processes include die-cutting, CNC routing & knifing, heat-welding, laminating. We can also glue Stratocell® to other materials such as cardboard, Correx®, Honeycomb board and wood.



Anti-static and flame-retardant grades are also available if required.



Typical designs include end-caps, trays & lids, layer pads, corner & edge protectors, and carton/crate dividers & liner sets. The use of special design features, such as hinged back-bars for example, optimizes material usage as well as reducing pack assembly times and storage space.

Plastazote® foam

Plastazote® foam is a closed cell cross-linked polyethylene foam (LDPE) available in a wide range of different colours and densities. Plastazote® foam has a depth and consistency of colour, which combined with exceptional chemical and water resistance, good UV stability, and high durability, makes it the material of choice for display packaging such as, flight case inserts, multi-use dunnage trays (commonly used on production assembly lines) and tool control 'shadow-boards', or where a permanent foam solution is required.



Excel can process Plastazote® foam by either die-cutting or CNC routing/knifing it. It can be heat-welded to itself or bonded to other materials such as brushed nylon fabric, cardboard, wood, metal, and plastics to create the ideal final solution.

Flexible Polyurethane / Polyether foams

Commonly referred to as 'Polyether' (PE) or 'soft polyurethane foam' (PU), this type of foam is an open-cell, flexible foam that boasts a seemingly endless range of applications. These foams are available in a range of different colours and densities (typically 12 – 30 kg/m³) and exhibit excellent compressibility. This flexibility enables the material to be compressed and deformed multiple times and then bounce back to its original shape/form. Anti-static and flame-retardant grades are also available, together with a 100% recycled material which is often referred to simply as 'reconstituted chip-foam'.



When it comes to cushioning fragile, high value items like glassware, crockery, electronic components, scientific instruments or medical equipment, custom-made protective packaging employing the use of flexible polyurethane foam, often achieves the best results.

Our manufacturing processes include die-cutting and CNC knifing. We can also glue polyurethane foam to other materials such as cardboard, Correx®, Honeycomb board and wood.

Ply/Batten Wooden Crates & cases

Excel Packaging is a manufacturer of bespoke ply/batten wooden crates. Designed, manufactured and assembled in Rickmansworth, we offer bespoke 'made to measure' wooden crates and cases, which are produced quickly and to a very high standard. We can also incorporate additional components such as custom-made internal foam fittings, metal carry-handles, toggle latches, catch-bolts, hinges and edge & corner protectors.

All of our finished products which incorporate softwood are clearly stencilled with our unique ISPM-15 identification mark (Registration No. FC0783) to ensure compliance with international standards and demonstrate their suitability for use worldwide.



Excel is a member of the UK Wood Packaging Material Marking Programme and is approved by the Forestry Commission to provide ISPM-15 certified wood packaging which has been heat treated to 56°C for a minimum of 30 minutes (56/30) to kill any pests present in the wood.

EXCEL

Bespoke Pallets & Tray/Cap and Sleeves

Standard wooden pallets and corrugated cardboard pallet boxes are manufactured to either UK (1200 x 1000mm) or Euro (1200 x 800mm) pallet sizes and usually in 2 different height variations. **But what if you require a non-standard size?**

Excel manufactures bespoke pallets to your exact specifications in volumes from '1' up to as many as you require. In addition, we can manufacture corrugated Tray/Cap & Sleeves attached to your pallet or these can be supplied separately in either 300KT/BC or heavy duty 530CA flute material grades.

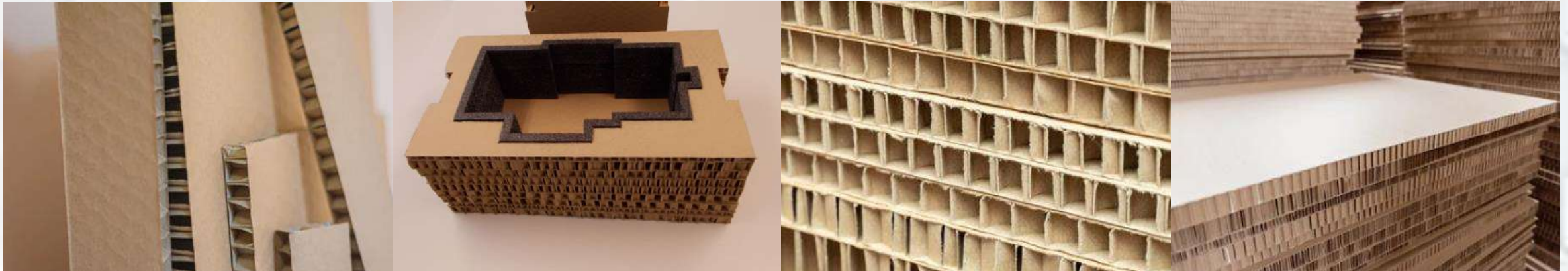
We are proud to emphasize that all our timber is FSC certified by the Forestry Commission and stamped accordingly. This certification ensures that our timber comes from responsibly managed forests, reflecting our unwavering commitment to sustainability.



Honeycomb Board

Paper honeycomb board is a light-weight material made from virgin or recycled (testliner) papers. The inner structure of paper honeycomb board gives it a very high compressive strength, which can exceed 70PSI. The material takes its name from the shape of its hexagonal inner core that resembles the honeycomb built by bees. It is 100% recyclable and available in a wide range of thicknesses and grades.

Our in-house design team provides environmentally sustainable, cost-effective protective packaging solutions, employing paper honeycomb material tailored to your specific needs. Typical designs include end-caps, trays & lids, layer pads, corner & edge protectors, carton/crate dividers & liners. The use of special design techniques, such as partial-depth cutting, enable the honeycomb board to be 'hinged' in order to create one-piece foldable fittings, optimizing material usage and reducing pack assembly times and storage space.

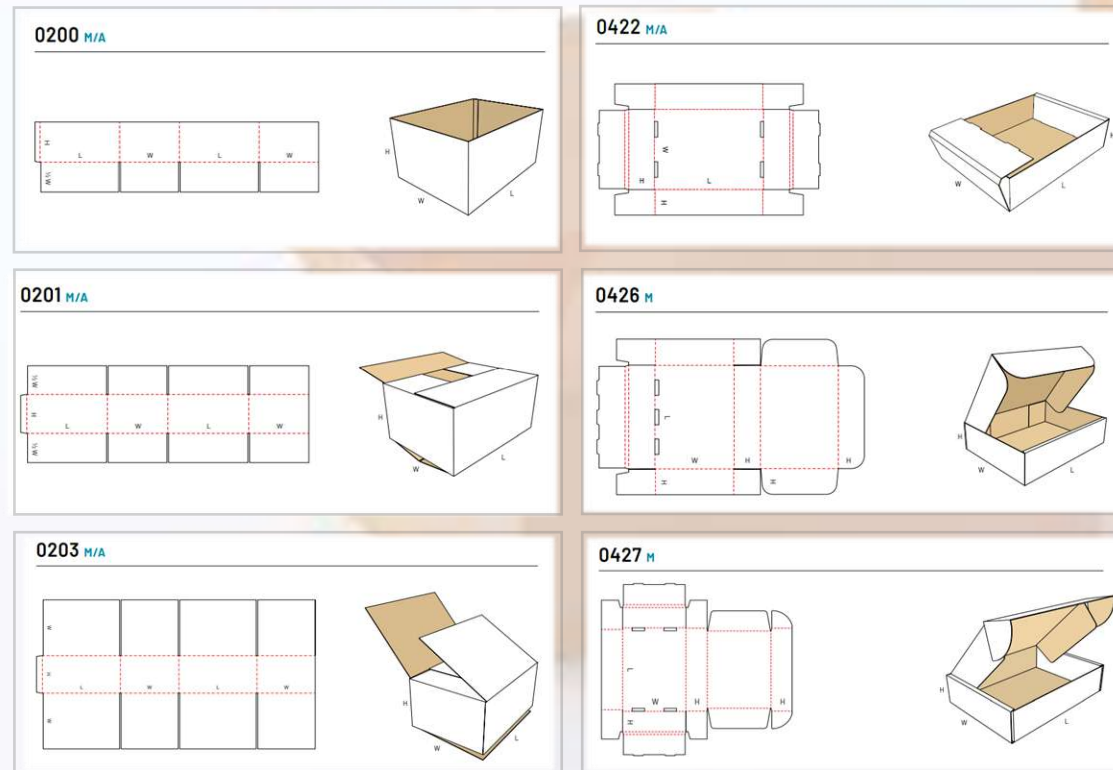
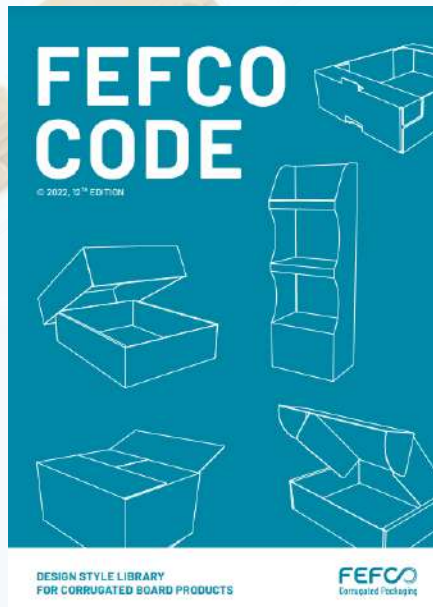


Excel's manufacturing processes include die-cutting, CNC knifing, laminating, and gluing.

EXCEL

Short - run Corrugated Cartons

Although our core manufacturing capabilities centre around foam and honeycomb products, in many cases these products are either laminated or glued on to corrugated cardboard or packed within a corrugated carton. Excel has the capability to manufacture short runs of many different Fefco designs and can produce either regular 'slotted' cartons or diecut designs in the following 'stock' board grades; 150KT/B, 150KTB/C, 200KT/B, 200KT/BC, 300KT/B, 300KT/BC, 150KT/C, 150WT/B, 150WT/BC, 150KT/E, 150WKT/E. We also stock and can convert heavy duty 530CA flute board. Other board grades are available to order.



EXCEL

Speciality corrugated materials

Corrugated plastic or Corriboard®

Also known under the trade names of Biplex, Cartonplast, Polyflute, Coroplast, Proplex, Correx, Twinplast, Corriflute and Corflute, refers to a wide range of extruded twin-wall plastic-sheet products produced from high-impact polypropylene resin with a similar make-up to corrugated fiberboard. Materials available from stock include;

- ✓ Black 3mm x 550gsm Correx in sheet size: 2440 x 1220mm,
- ✓ White 3mm x 550gsm in a sheet size of 2440 x 1220mm.
- ✓ Light Blue 5mm x 1000gsm in a sheet size of 2440 x 1220mm.
- ✓ Other colours are available on request but are subject to a minimum order volume.

Corstat® electro-static board

Corstat® is a corrugated cardboard material treated with a black, specialized coating, allowing it to be used in the manufacturing of corrugated packaging where an electrostatic barrier is required between the packaging and the item being packed.

At Excel Packaging, we can convert both materials into a variety of designs with processes that include; die-cutting, CNC knifing, laminating and gluing in order to create trays & lids, layer pads, cartons and crate dividers, liners and other Fefco designs.

What 'greener' alternatives can Excel Packaging offer?



EXCEL

Envirafoam® by Excel

More-sustainable packaging solutions are becoming a higher priority for both brand owners and consumers. In fact, more environmentally responsible protective packaging is no longer just an option - **it's now a necessity.**

Whilst most of the protective foam packaging materials supplied by Excel incorporate at least 30% recycled material and are themselves fully recyclable, there are genuine concerns around the continued use of petro-chemical based foams, in particular due to the variability of doorstep recycling capabilities around the UK.



With the advent of some revolutionary new materials, Excel are pleased to announce the launch of our 'trademarked' product range of more-sustainable protective foam packaging options called Envirafoam. Without compromising on performance, these fantastic new materials offer a real-world solution within a difficult product sector where pack performance and quality is required, usually at the expense of the environment.

EXCEL

Envirafoam® R

Envirafoam® R is a closed cell foam with a minimum of 65% recycled content. It is light-weight, non-abrasive and ideal for packaging applications where a high level of cushioning protection is required. In addition to being made from 65% recycled material, Envirafoam® R is also fully recyclable, is better for the environment than traditional foams and uses less material to protect your goods, making it a more sustainable and eco-friendly option.

Our manufacturing processes include die-cutting, CNC routing & knifing, heat-welding and laminating. We can also glue Stratocell® to other materials such as cardboard, Correx®, Honeycomb board and wood.



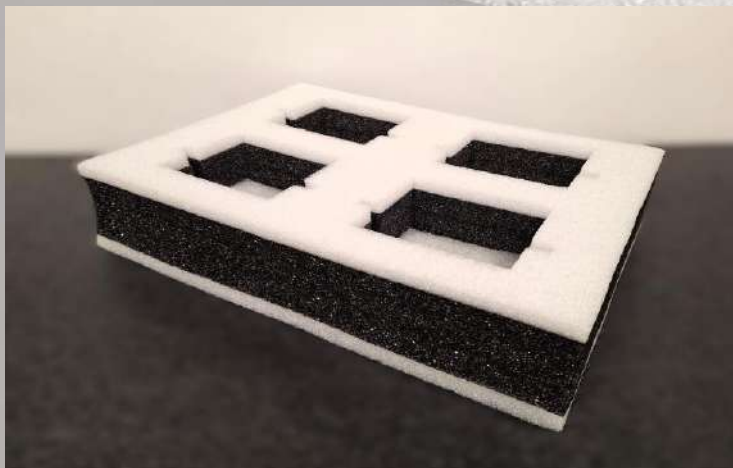
EXCEL

Envirafoam® Panda

Envirafoam® Panda - our latest innovation in environmentally conscious packaging solutions that beautifully combines sustainability with aesthetic appeal.

As part of the trusted Envirafoam® range, Envirafoam® Panda merges the eco-friendly strength of Black Envirafoam® R (containing 65% recycled content) with the sleek look of white polyethylene foam into a composite material. This hybrid design is perfect when the visual appeal of a clean, finish is required, but standard white foam with 30% recycled content doesn't meet your environmental goals.

By laminating black and white foams together, Envirafoam® Panda achieves the desired balance between aesthetics and eco-consciousness, without compromising strength or integrity. Its lightweight, non-abrasive, closed-cell expanded polyethylene (LDPE) foam offers excellent cushioning and protection, making it an ideal choice for various packaging applications. The material thicknesses can be customized to adjust recycled content, ensuring optimal sustainability.



Key Benefits:

- ✓ Environmentally conscious with adjustable recycled content.
- ✓ Visually attractive; clean finish for enhanced aesthetics.
- ✓ Made from fully recyclable polyethylene foam.
- ✓ Offers superior cushioning and protection for packaging applications.

Envirafoam® E P

Envirafoam® EP is a highly resilient closed-cell bead foam packaging material, manufactured from EPE (expanded polyethylene). The material has excellent properties for absorbing and dissipating energy and exhibits isotropic behaviour (uniform performance in all directions). This means it is perfect for packing highly sensitive products.

Envirafoam® EP is 100% recyclable, has 30% recycled content sourced and enables material savings of up to 40% versus other PE foams, whilst maintaining the same protective properties. It could be considered as the 'missing link' between traditional Stratocell® and Plastazote® foams, offering a truly sustainable and cost-effective alternative!

**Available Colour:
Black**

**Density Options:
20/ 30/ 45 Kg/m3**

EXCEL

Envirafoam® R18 & R27

Envirafoam® R18 and R27 are a low density, closed-cell, cross-linked polyethylene block foam made with 30% recycled content and manufactured using a unique production process. Both materials have a depth and consistency of colour, which combined with exceptional chemical and water resistance, good UV stability, and high durability, makes them the material of choice for display packaging

Our manufacturing processes include die-cutting, CNC routing & knifing, heat-welding, laminating, and gluing to other materials such as cardboard and wood.



Density Options:
18 & 27kg/m³

Available Colour:
Black

EXCEL

Envirafoam® W P (Fibrease®)

Envirafoam® WP (Fibrease®) is a lightweight wood fiber-based foam material made from FSC certified Nordic wood. It is a soft yet resilient material with memory foam like behaviour. Crucially, it is fully kerbside recyclable in the paper/cardboard waste stream (PTS assessment RH 021:2012). This revolutionary material significantly reduces CO2-emissions when replacing polymer-based foams and is produced using an efficient dry-forming process, employing low energy and zero water consumption. It has been designed to replace traditional 'polymer' foams in some packaging solutions and can also be used as a viable alternative to Polystyrene where thermal insulation is required.

Made using FSC-certified wood pulp, it is a soft yet resilient material with a memory foam like behaviour. We can apply various conversion methods including sawing, die-cutting and laminating to create your desired pack.





**Design
Innovate**

**Develop
Produce**